

NATIONAL
COUNCIL
for Mental
Wellbeing

Financing the Future of Integrated Care Billing: 2024 Updates Q&A

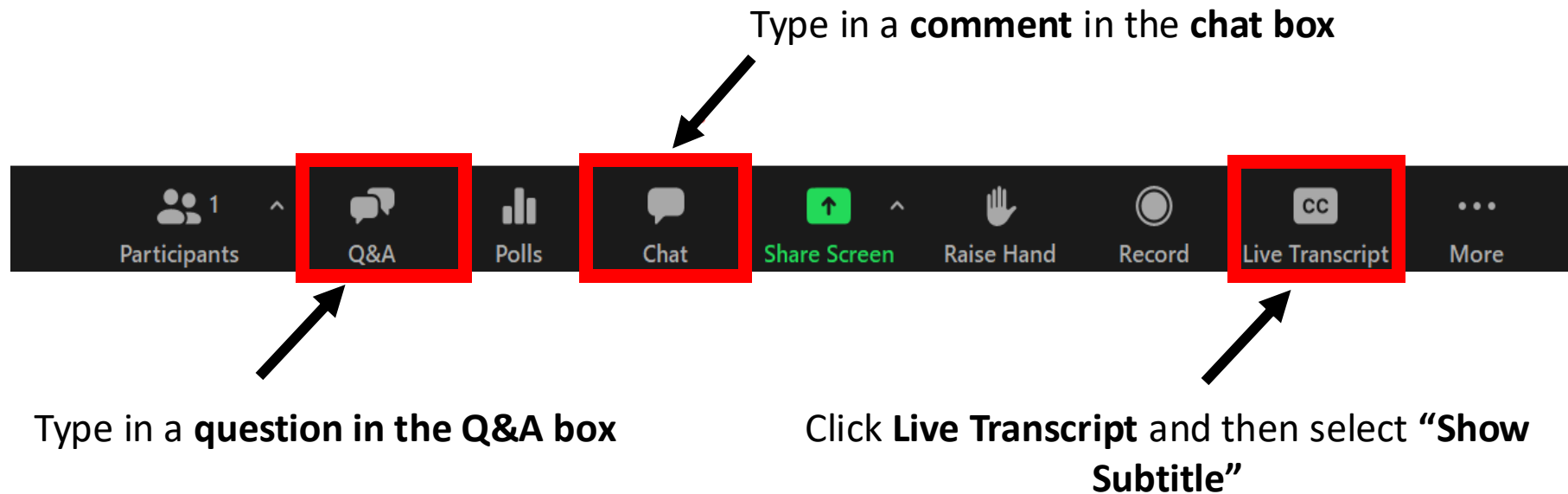
Thursday, July 25, 2024
12:00pm – 1:00pm E.T.

CENTER OF EXCELLENCE for Integrated Health Solutions

Funded by Substance Abuse and Mental Health Services Administration and operated by the National Council for Mental Wellbeing



Questions, Comments & Closed Captioning



Disclaimer

The views, opinions, and content expressed in this presentation do not necessarily reflect the views, opinions, or policies of the Center for Mental Health Services (CMHS), the Substance Abuse and Mental Health Services Administration (SAMHSA), or the U.S. Department of Health and Human Services (HHS).

SAMHSA

Substance Abuse and Mental Health
Services Administration

www.samhsa.gov

NATIONAL
COUNCIL
for Mental
Wellbeing



Speakers



Selina Hickman,
*Principal, Bowling
Business Strategies*



Rachael Matulis, MPH,
*Principal, Bowling
Business Strategies*

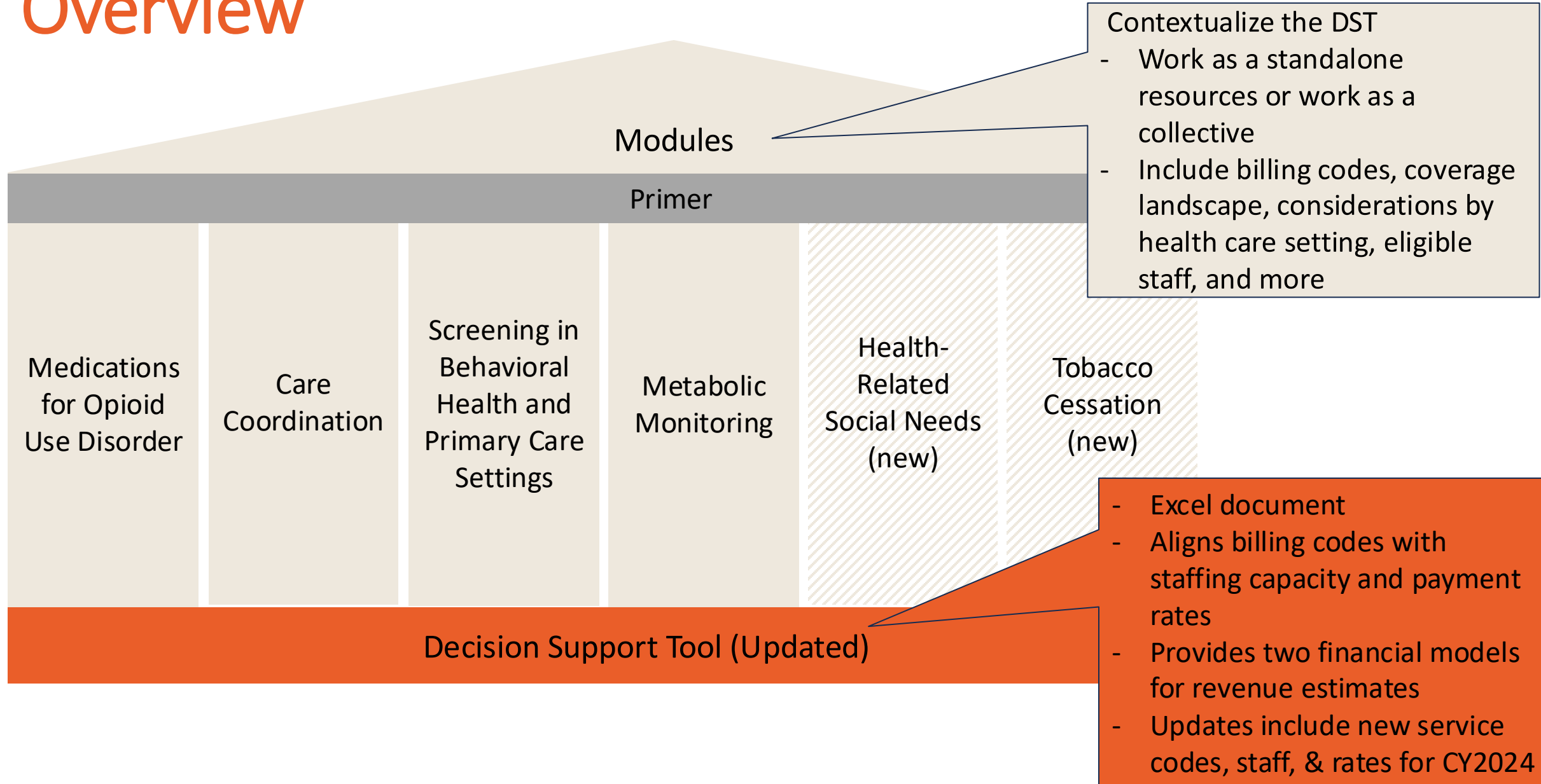


Virna Little, PsyD, MBA, LCSW,
*Co-Founder and COO,
Concert Health*

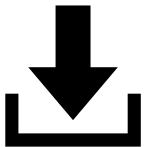
NATIONAL
COUNCIL
*for Mental
Wellbeing*



Module and Decision Support Tool (DST) Overview



Module and Decision Support Tool (DST)



[View and Download the 2022 Decision Support Tool and Billing Modules](#)

Note: the DST with 2024 updates will be released later this summer!

Download

Decision Support Tool ↓ Primer ↓ 1. MOUD ↓ 2. Screening ↓

3. Care Coordination ↓ 4. Metabolic Monitoring ↓

Financing the Future of Integrated Care Webinar +

Decision Support Tool and Billing Modules

The Decision Support Tool (DST) is designed to help provider organizations sustainably finance integrated care.

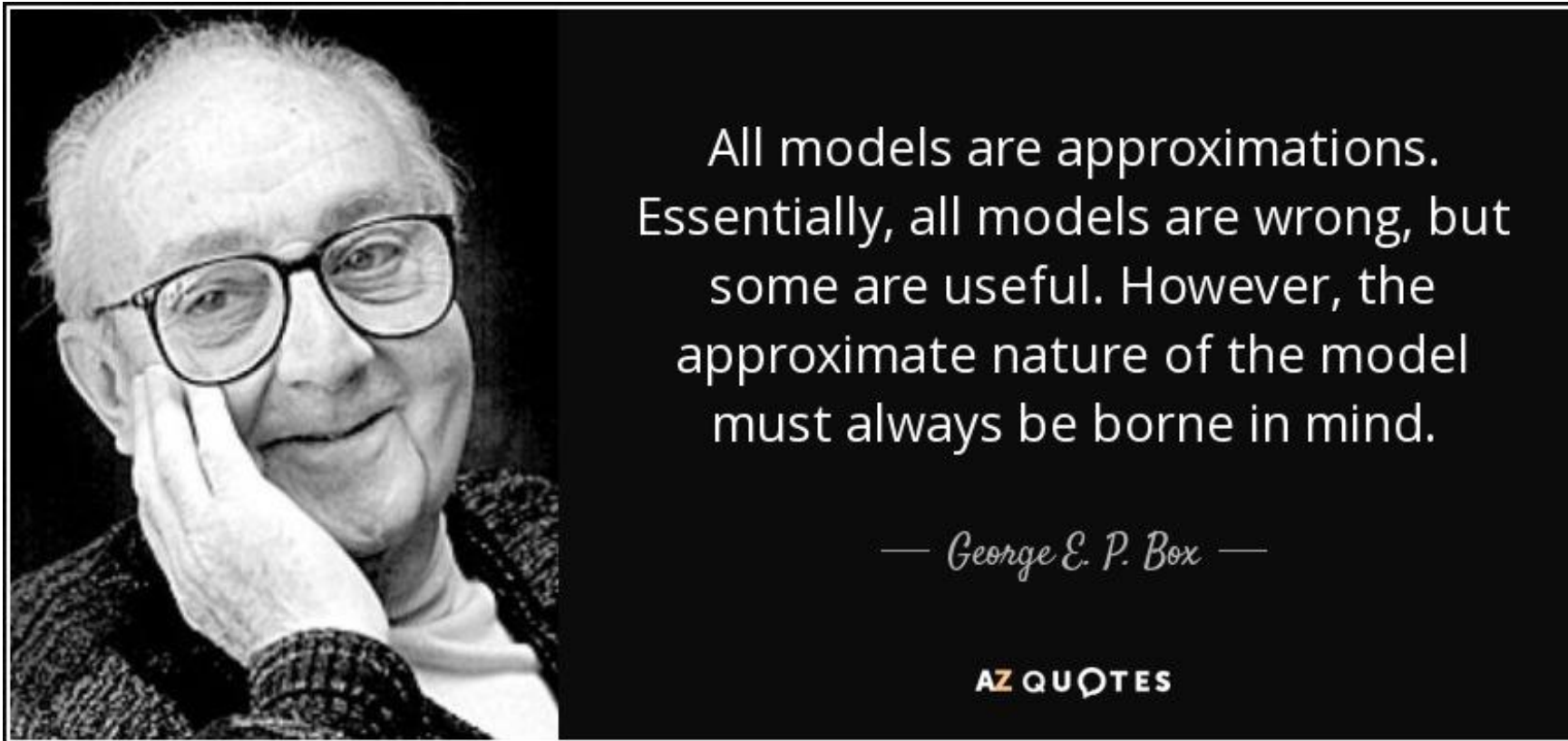
The DST empowers providers to estimate Medicare and Medicaid revenue across prominent integrated care services to finance these services more effectively in community mental health care, substance use treatment and primary care provider organizations. It includes a list of specific billing codes, service types, professional discipline coverage, documentation and time requirements.

A set of companion integrated care billing modules offer guidance for optimizing financing strategies across four integrated care service types:

1. Medication for opioid use disorder (MOUD)
2. Screening
3. Care Coordination
4. Metabolic monitoring

This tool was supported by the National Council for Mental Wellbeing's Center of Excellence for Integrated Health Solutions and funded by a grant award from the Substance Abuse and Mental Health Services Administration and managed by the National Council for Mental Wellbeing.

“All models are wrong, but some are useful.”



NATIONAL
COUNCIL
for Mental
Wellbeing



The Decision Support Tool (DST): New Modules in 2024

1. Health-related social needs (HSRN)
 2. Tobacco Cessation
-

Health-Related Social Needs (HRSN)

Services to address HRSN can be provided in multiple health care settings

HRSN services can be provided by a wide range of staff types

There are new Medicare covered HRSN services

Socio-economic factors drive 50-80% of all health outcomes, with only 20% of outcomes attribute to clinical care.¹

Individuals with identified behavioral health needs are more likely to have unmet or adverse HRSN.^{2,3}

¹ [Hood, C.M. et al. \(2016\). County Health Rankings: Relationships Between Determinant Factors and Health Outcomes.](#)

² [Whitman A. et al. \(2022\). Addressing Social Determinants of Health: Examples of Successful Evidence-Based Strategies and Current Federal Efforts.](#)

³ [Omolola, A. E. et al. \(2022\). Assessment of Unmet Health-Related Social Needs Among Patients With Mental Illness Enrolled in Medicare Advantage.](#)

Tobacco Cessation

Cigarette smoking is the leading cause of preventable death in the United States

Tobacco cessation services can be provided in multiple health care settings

Tobacco cessation services can be provided by a wide range of staff types

Tobacco cessation services widely viewed as underutilized and underdelivered

Most payers cover tobacco cessation treatment services

Disparities abound as it relates to tobacco use and treatment

NATIONAL
COUNCIL
for Mental
Wellbeing

Sources:

1. [U.S. Department of Health and Human Services. \(2024\). HHS Framework to Support and Accelerate Smoking Cessation 2024.](#)
2. [American Lung Association. \(2021\). Billing Guide Addendum for Behavioral Health.](#)



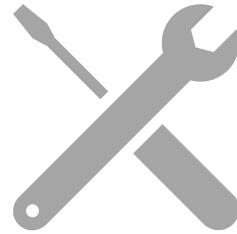


Q&A

Your Feedback is Greatly Appreciated!



How can the content be improved?



What format is most user-friendly?



What is missing from these tools?



Survey Link:

<https://www.surveymonkey.com/r/MQR685L>

NATIONAL
COUNCIL
for Mental
Wellbeing

Questions?

NATIONAL
COUNCIL
for Mental
Wellbeing

Get in touch with us:

Selina Hickman: selina@bowlingbizpa.com

Rachael Matulis: rachael@bowlingbizpa.com

Virna Little: virna@concerthealth.io

CENTER OF EXCELLENCE for Integrated Health Solutions

Funded by Substance Abuse and Mental Health Services Administration and operated by the National Council for Mental Wellbeing

End of Session Polls

Poll questions will pop up on your screen to complete.



References

- [Hood, C.M. et al. \(2016\). County Health Rankings: Relationships Between Determinant Factors and Health Outcomes.](#)
- [Whitman A. et al. \(2022\). Addressing Social Determinants of Health: Examples of Successful Evidence-Based Strategies and Current Federal Efforts.](#)
- [Omolola, A. E. et al. \(2022\). Assessment of Unmet Health-Related Social Needs Among Patients With Mental Illness Enrolled in Medicare Advantage.](#)
- **Place of Service Change Transmittal:** [Centers for Medicare & Medicaid Services. \(2021\). CMS Manual System: New Place of Service \(POS\) Code 27 - "Outreach Site/Street."](#)
- **Place of Service Code Set:** [Centers for Medicare & Medicaid Services. \(2024\). Place of Service Code Set.](#)
- [Department of Health and Human Services and Centers for Medicare & Medicaid Services.\(2023\). CY 2024 Revisions to Payment Policies Under the Physician Fee Schedule and Other Revisions to Medicare Part B \(CMS-1784\)\(Section 610 Review\).](#)
- [New in 2024 - Pg. 2069. Department of Health and Human Services and Centers for Medicare & Medicaid Services. \(2023\). CY 2024 Revisions to Payment Policies Under the Physician Fee Schedule and Other Revisions to Medicare Part B \(CMS-1784\)\(Section 610 Review\).](#)
- [U.S. Department of Health and Human Services. \(2024\). HHS Framework to Support and Accelerate Smoking Cessation 2024.](#)
- [U.S. Preventative Services Task Force. \(2021\). Final Recommendation Statement: Tobacco Smoking Cessation in Adults, Including Pregnant Persons: Interventions.](#)
- [Analysis of data at: FindTreatment.gov](#)
- [National Health Center Program Uniform Data System \(UDS\) Awardee Data \(hrsa.gov\)](#)
- [American Lung Association. \(2024\). Smoking Cessation - The Economic Benefits.](#)
- [Medicaid.gov. \(2024\). Adult Health Care Quality Measures.](#)
- [Burke, M. V. et al. \(2015\). Treatment Outcomes From a Specialist Model for Treating Tobacco Use Disorder in a Medical Center](#)



Resources

- [Medicare Physician Fee Schedule \(PFS\) Final Rule CY2024](#)
- [CMS PFS Final Rule Fact Sheet](#)
- [CMS FAQ re: Health-Related Social Needs \(HRSN\)](#)
- [CMS Medicare Learning Network Booklet, Health Equity Services in the 2024 Physician Fee Schedule Final Rule](#)
- [HRSN Codes Implementation Resources](#)
- [American Lung Association Billing Addendum for Behavioral Health](#)
- [Resource Guide: A Health Plan's Guide to Developing CBO Contract Scopes of Work](#)
- [Resource Guide: Partnerships with Community-based Organizations: Opportunities for Health Plans to Create Value](#)
- [Resource Guide: A Health Plan's Guide to Paying CBOs for Social Care](#)



Stay Connected with the Center of Excellence!



Subscribe for Center of Excellence
Updates

[Subscribe Here](#)

View Past Session Recordings and Slides
on Our Website!

[Past Events](#)

NATIONAL
COUNCIL
for Mental
Wellbeing



Thank You

Questions?

Email integration@thenationalcouncil.org

SAMHSA's Mission is to reduce the impact of substance abuse and mental illness on America's communities.

www.samhsa.gov

1-877-SAMHSA-7 (1-877-726-4727) 1-800-487-4889 (TDD)

