

# Voices from the Field: Centering Lived and Living Experience in Overdose Prevention

**Monday, July 29 | 2-3:30 pm ET**

# Housekeeping

- You will be muted automatically upon entry and for the duration of the webinar.
- For audio access, participants can either dial into the conference line or listen through your computer speakers.
- Closed captioning can be accessed by turning on the closed captioning feature on the Zoom dashboard.
- If you have any technical issues, please send a direct Zoom chat message to the hosts.
- This webinar is being recorded and will be shared via email following the webinar.

To ask a question, enter it in the Q&A box.

To message our panelists directly, use the Chat feature.

Click on "More" and turn on closed captioning.



*This presentation was supported by the Centers for Disease Control and Prevention (CDC) of the U.S. Department of Health and Human Services (HHS) as part of a financial assistance award totaling \$248,980 with 100% funded by CDC/HHS. The contents are those of the author(s) and do not necessarily represent the official views of, nor an endorsement by, CDC/HHS or the U.S. Government.*

# Today's Presenters



**Anne Siegler**  
Consultant, National Council for  
Mental Wellbeing



**Yarelix Estrada**  
BADUPCT, NYC DOHMH



**Terrell Jones**  
OnPoint NYC



**DeAunte Damper**  
VOCAL-Washington, CEADU



**Brad Finegood**  
Public Health - Seattle & King County



**Thea Oliphant-Wells**  
Public Health - Seattle & King County

# Agenda

- **Welcoming remarks from the CDC**
- **Resource overview** – *Ensuring the Inclusion of People with Lived and Living Experience in Health Departments’ Overdose Surveillance and Prevention Efforts*
- **Panelist discussion and Q&A**
  - Review key considerations from the series of tools “Ensuring the Inclusion of People with Lived and Living Experience in Health Departments’ Overdose Surveillance and Prevention Efforts.”
  - Discuss the successes and challenges experienced by field experts in collaborations between health departments and communities.
  - Examine notable methods for supporting, valuing and prioritizing PWLLE in health department overdose prevention programming.



# Welcoming Remarks from the CDC



**Miranda Gali, MPH, MSW**

Public Health Analyst

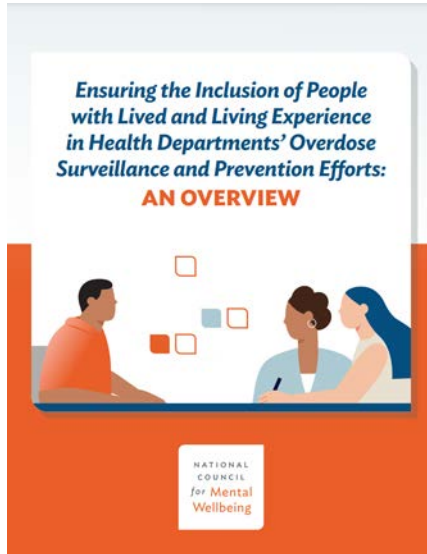
Division of Overdose Prevention, National Center for Injury Prevention and Control



# Centering Lived and Living Experience in Health Departments' Overdose Prevention Efforts

Series of five tools:

- [Ensuring the Inclusion of People with Lived and Living Experience in Health Departments' Overdose Surveillance and Prevention Efforts: An Overview](#)
- [Hiring People with Lived and Living Experience within Local and State Health Departments](#)
- [Engaging People with Lived and Living Experiences in Overdose Data Collection, Interpretation and Dissemination](#)
- [Meaningfully Partnering with Harm Reduction Organizations and Other Community-based Organizations that Serve People Who Use Drugs](#)
- [Annotated Resources](#)



NATIONAL  
COUNCIL  
for Mental  
Wellbeing



# Zoom Poll Question: What type of organization do you work for?

- A. Local health department
- B. State health department
- C. Harm reduction organization
- D. Clinical services
- E. Advocacy organization
- F. Other community-based organization
- G. Community member
- H. Law enforcement/public safety
- I. Other



NATIONAL  
COUNCIL  
for Mental  
Wellbeing

# New York City Department of Health and Mental Hygiene & OnPoint NYC Collaboration

**Yarelix Estrada**, Drug Checking Manager at BADUPCT, NYC DOHMH &

**Terrell Jones**, Community Engagement and Advocacy Manager at OnPoint NYC



# New York City Department of Health and Mental Hygiene & OnPoint NYC Collaboration



**Public Health —  
Seattle and King  
County & Council  
of Expert Advisors  
on Drug Use  
(CEADU) & VOCAL-  
WA Collaboration**



NATIONAL  
COUNCIL  
*for* Mental  
Wellbeing

**Public Health**  

---

**Seattle & King County**



**Brad Finegood**, Strategic Advisor at Public Health -  
Seattle & King County

**Thea Oliphant-Wells**, Harm Reduction and Fentanyl  
Testing Program Manager at Public Health - Seattle  
& King County &

**DeAunte Damper**, Community Organizer at VOCAL-  
WA, Project Manager for CEADU



## VOCAL Washington

VOCAL-WA is a grassroots membership organization building power among no and low-income people who are affected by war on drugs, substance use, homelessness, HIV/AIDS, mass incarceration, and other forms of systemic violence.

NATIONAL  
COUNCIL  
*for Mental  
Wellbeing*

# CEADU Projects

(said like see-doo)

## Gathering Community Voice related to:

- Impacts of changes in Drug Laws
- Overdose in Supportive Housing and Shelter
- Wound Care kits and other supplies

## Facilitating Expert Advisors attendance to meetings and events where they share lived experience:

- Health Care Authority's Substance Use Recovery Services Advisory Committee
- Panels
- Educating community leaders

And more!!



NATIONAL  
COUNCIL  
*for Mental  
Wellbeing*



# Panelist Discussion & Q&A

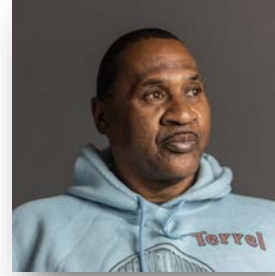
Please submit your questions using the Q&A box at the bottom of the screen.



**Anne Siegler**  
Consultant, National Council for  
Mental Wellbeing



**Yarelix Estrada**  
BADUPCT, NYC DOHMH



**Terrell Jones**  
OnPoint NYC



**DeAunte Damper**  
VOCAL-Washington, CEADU



**Brad Finegood**  
Public Health - Seattle & King County

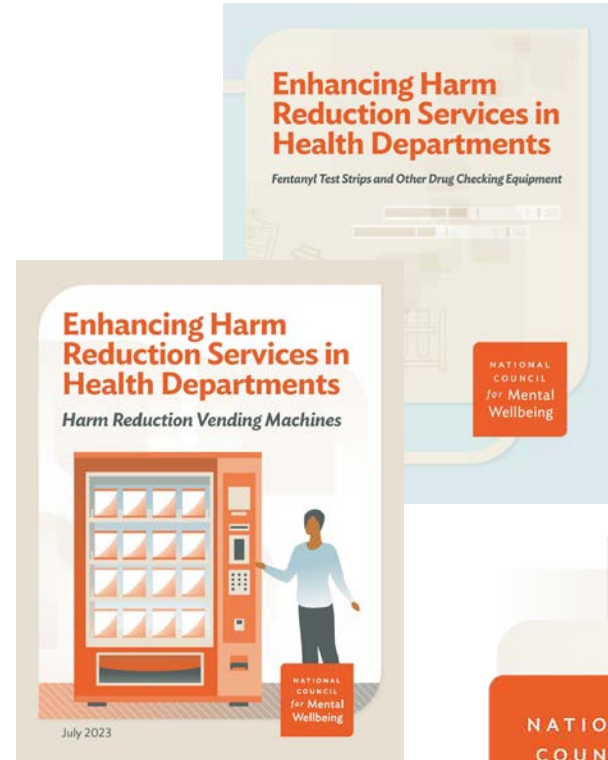


**Thea Oliphant-Wells**  
Public Health - Seattle & King County

NATIONAL  
COUNCIL  
for Mental  
Wellbeing

# Additional Resources

- [Enhancing Harm Reduction Services in Health Departments: Harm Reduction Vending Machines](#)
- [Enhancing Harm Reduction Services in Health Departments: Fentanyl Test Strips and Other Drug Checking Equipment](#)
- [Establishing Peer Support Services for Overdose Response: A Toolkit for Health Departments](#)
- [Overdose Response and Linkage to Care: A Roadmap for Health Departments](#)



# Thank You!

**Anne Siegler**

Consultant, National Council for Mental Wellbeing  
[annesiegler.consulting@gmail.com](mailto:annesiegler.consulting@gmail.com)

**Yarelis Estrada**

BADUPCT, NYC DOHMH  
[yestrada1@health.nyc.gov](mailto:yestrada1@health.nyc.gov)

**Terrell Jones**

OnPoint NYC  
[tjones@onpointnyc.org](mailto:tjones@onpointnyc.org)

**Brad Finegood**

Public Health – Seattle & King County  
[brad.finegood@kingcounty.gov](mailto:brad.finegood@kingcounty.gov)

**Thea Oliphant-Wells**

Public Health – Seattle & King County  
[thea.oliphant-wells@kingcounty.gov](mailto:thea.oliphant-wells@kingcounty.gov)

**DeAunte Damper**

VOCAL-WA, CEADU  
[deaunte.damper@vocal-wa.org](mailto:deaunte.damper@vocal-wa.org)



<https://www.surveymonkey.com/r/centeringPWLE>