

NATIONAL
COUNCIL
for Mental
Wellbeing

CCBHC-E National Training and Technical Assistance Center

Community Housing Partnerships
July 31, 2024

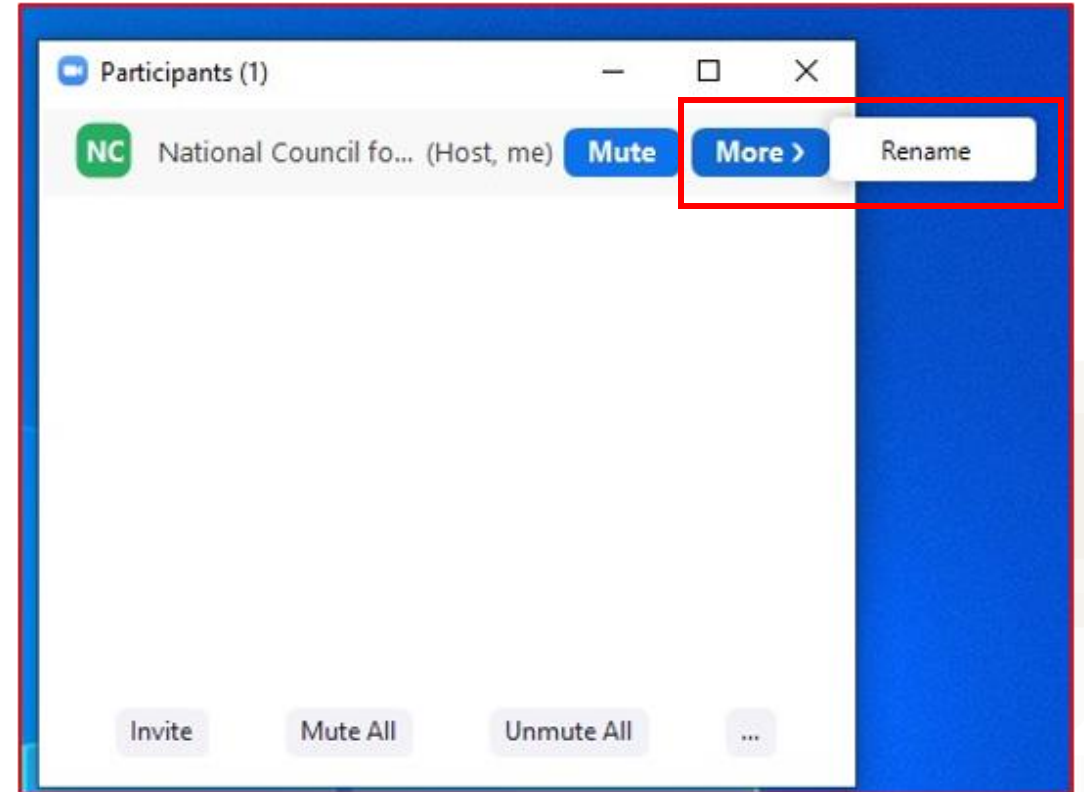
CCBHC-E National Training and Technical Assistance Center

Funded by Substance Abuse and Mental Health Services Administration and operated by the National Council for Mental Wellbeing

This publication was made possible by Grant No. 1H79SM085856 from the Substance Abuse and Mental Health Services Administration (SAMHSA). Its contents are solely the responsibility of the authors and do not necessarily represent the official views, opinions or policies of SAMHSA, or the U.S. Department of Health and Human Services (HHS).

Logistics

- Please rename yourself so your name includes your organization.
- For example:
 - **Kat Catamura, National Council**
- To rename yourself:
 - Click on the **Participants** icon at the bottom of the screen
 - Find your name and hover your mouse over it
 - Click **Rename**
- If you are having any issues, please send a Zoom chat message to **Kat Catamura, National Council**

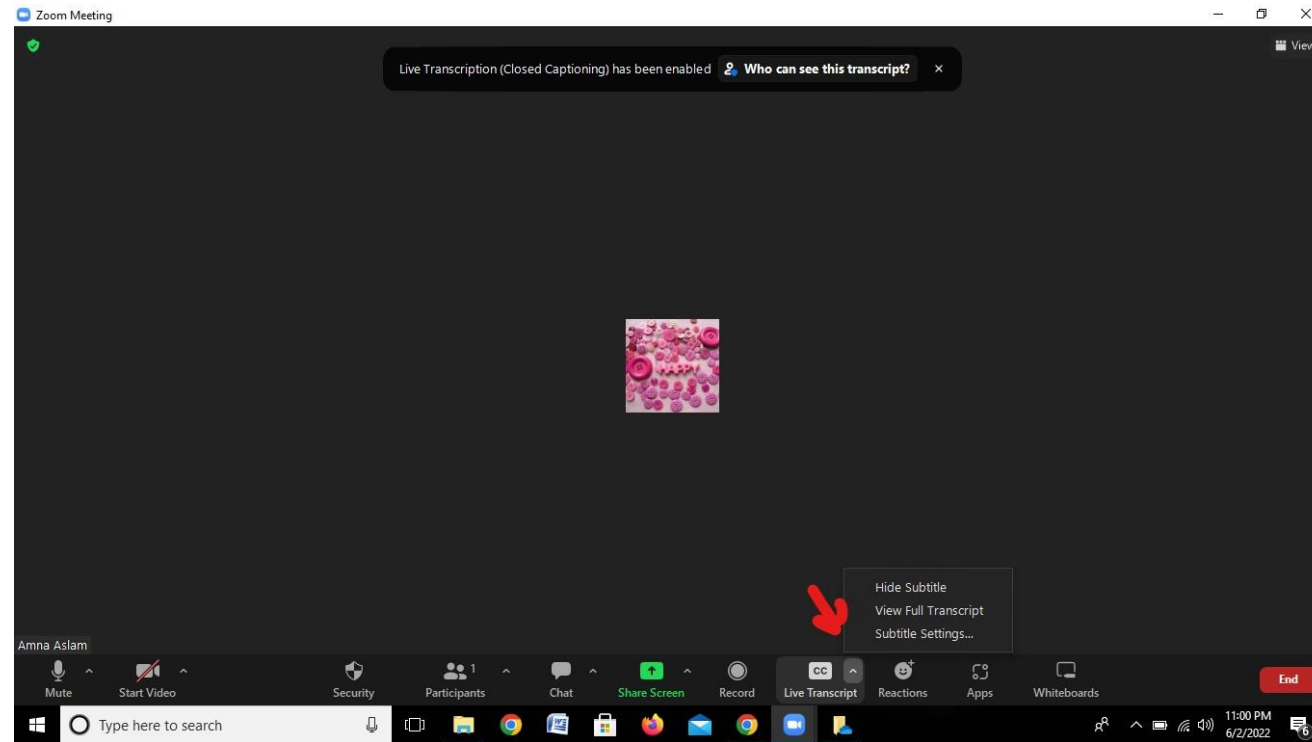


NATIONAL
COUNCIL
for Mental
Wellbeing

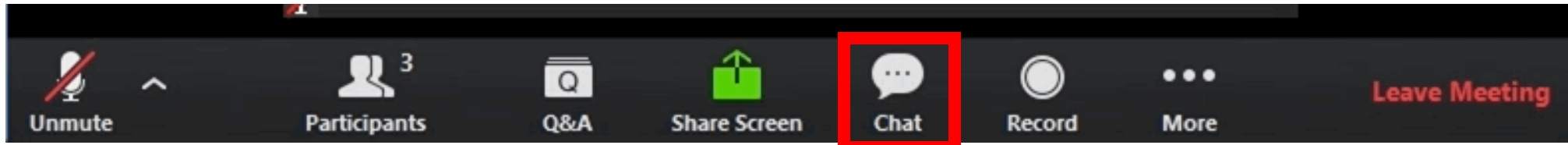


How to Enable Closed Captions (Live Transcript)

Next to “Live Transcript,” click the arrow button for options on closed captioning and live transcript.



How to Ask a Question



Please share questions throughout today's session using the **Chat Feature** on your Zoom toolbar. **We'll answer as many questions as we can throughout today's session.**

Today's Guest Presenters



Jane King (she/her)

Senior Consultant, National Council for Mental Wellbeing



Lawrence Vinson (he/him)

Senior Program Manager, Corporation for Supportive Housing



Nicole Brookshire (she/her)

National Consulting Director, Corporation for Supportive Housing



Jillian Watson Esposito (she/her)

Senior Program Manager, Corporation for Supportive Housing

NATIONAL COUNCIL
for Mental Wellbeing





About **CSH**

CSH collaborates to advance solutions that use housing as a platform for services to improve the lives of the most vulnerable people, maximize public resources and build healthy communities.

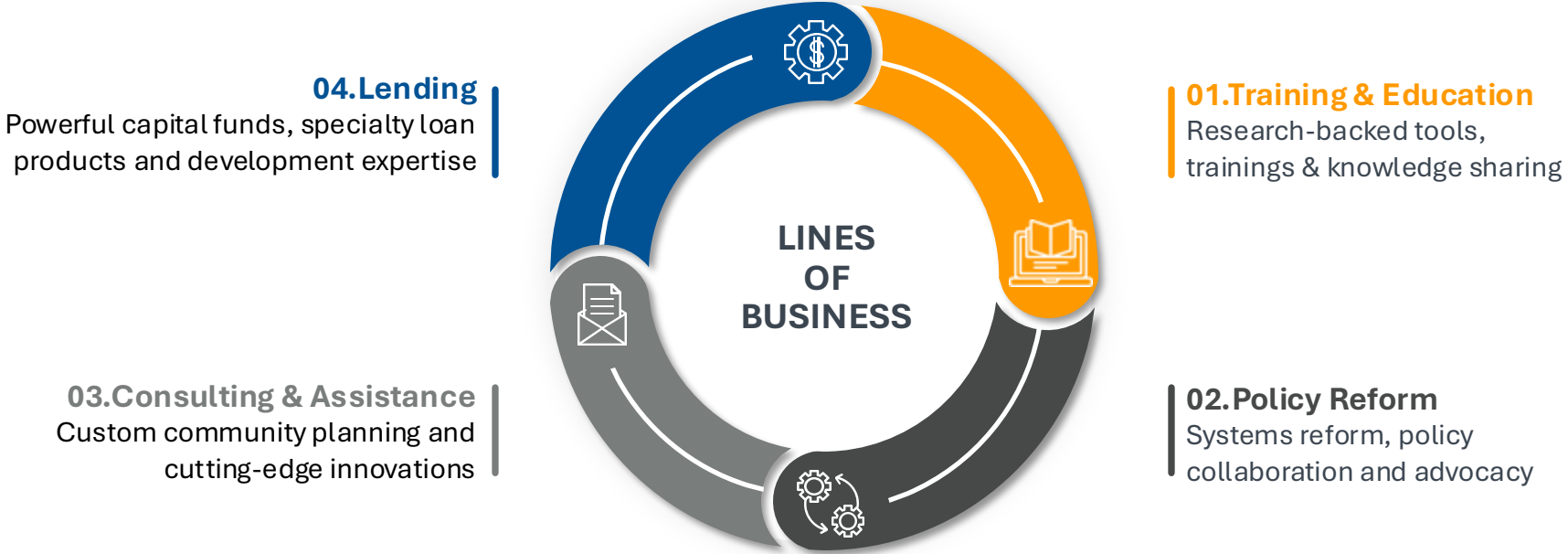


NATIONAL
COUNCIL
for Mental
Wellbeing



What We Do

CSH is a touchstone for new ideas and best practices, a collaborative and pragmatic community partner, and an influential advocate for supportive housing.



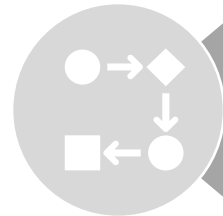
NATIONAL COUNCIL
for Mental Wellbeing

We want to
hear from
YOU!

Using the
CHAT, share
with us the
following



Your Name and Agency



Role at Agency



City, County, or State



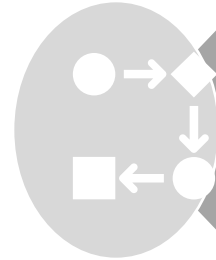
NATIONAL
COUNCIL
for Mental
Wellbeing



Today's Learning Objectives



Explore key partners in housing and homelessness systems



Partners: What each one does



Assessing Potential for Collaboration and Partnership



NATIONAL
COUNCIL
for Mental
Wellbeing



Scope of Services

CCBHC

The CCBHC organization will deliver the **majority of services** under the CCBHC umbrella directly rather than through DCOs (i.e., a majority of total service volume delivered across the nine required services).



Crisis Services



Screening, Assessment and Diagnosis



Person-centered and Family-centered Treatment Planning



Outpatient Mental Health and Substance Use Services



Primary Care Screening and Monitoring



Targeted Case Management Services



Psychiatric Rehabilitation Services



Peer Supports and Family/Caregiver Supports



Community Care for Uniformed Service Members and Veterans

The primary goal of the CCBHC program is to increase access to mental health and substance use care for underserved communities.

NATIONAL
COUNCIL
for Mental
Wellbeing



Systems vs Providers/ Agencies



Where do people with BH challenges live in our communities- THINK BROADLY



Where else?

- Affordable Housing- Public and private
- Supportive Housing
- With family
- Board and care/ group homes
- Peer Communities
- Specialized Group Home Settings
- Institutions such as Nursing Homes
- Assisted Living
- Recovery Housing
- Rapid Re-Housing and Transitional Housing
- Incarcerated
- Homeless, sheltered and unsheltered



NATIONAL
COUNCIL
for Mental
Wellbeing



Partner Strategically- Systems vs Agencies



© All rights reserved. No utilization or reproduction of this material is allowed without the written permission of CSH.

What is your
agency
looking for?

What is your
agenda?

Where to refer our participants for housing?

To fulfill CCBHC community outreach requirements

To find where people with BH challenges live in our
community so we can serve them more effectively

To collaborate with housing partners who are serving
our participants



NATIONAL
COUNCIL
for Mental
Wellbeing





Housing System Partners

Continuum of Care



- The front door of the homeless system
- Persons are assessed and prioritized (or not) for limited homeless system resources including
 - Diversion
 - Prevention
 - Emergency Shelter
 - Rapid Re-Housing
 - Permanent Supportive Housing
- Each system uses its own assessment tool. HUD requires certain data elements to be able to merge data across systems.
- Has a governing board that guides policy and funding decisions
- Looking for your CoC? Search here - [Grantee Contact Information - HUD Exchange](#)

© All rights reserved. No utilization or reproduction of this material is allowed without the written permission of CSH.



NATIONAL
COUNCIL
for Mental
Wellbeing



Public Housing Authority or PHA



- Likely the single largest affordable housing landlord, developer, and funder in your geography
- Manages
 - Public Housing
 - Housing Choice Voucher Program
 - Often develops housing using Low Income Housing Tax Credit program
- May have [Special Purpose Vouchers](#) to serve
 - Veterans
 - People with Disabilities
 - Youth Aging out of Foster Care
 - Others listed [here](#).
- Each PHA has its own Admission and Continued Occupancy Policy or ACOP that says who they will and will not house
- Looking for your local Public Housing Authority or PHA? Search here- [PHA Contact Information](#)

© All rights reserved. No utilization or reproduction of this material is allowed without the written permission of CSH.



NATIONAL
COUNCIL
for Mental
Wellbeing



State or Local Housing Departments

- Manages HUD programs such as HOME and Community Development Block Grant or CDBG
- Lead planning efforts? What housing does my state or community need?
- What funds are in place for capital? To build more programs for
 - Home Repair
 - Help older low-income residents stay in their homes
 - Housing counseling

© All rights reserved. No utilization or reproduction of this material is allowed without the written permission of CSH.



NATIONAL
COUNCIL
for Mental
Wellbeing



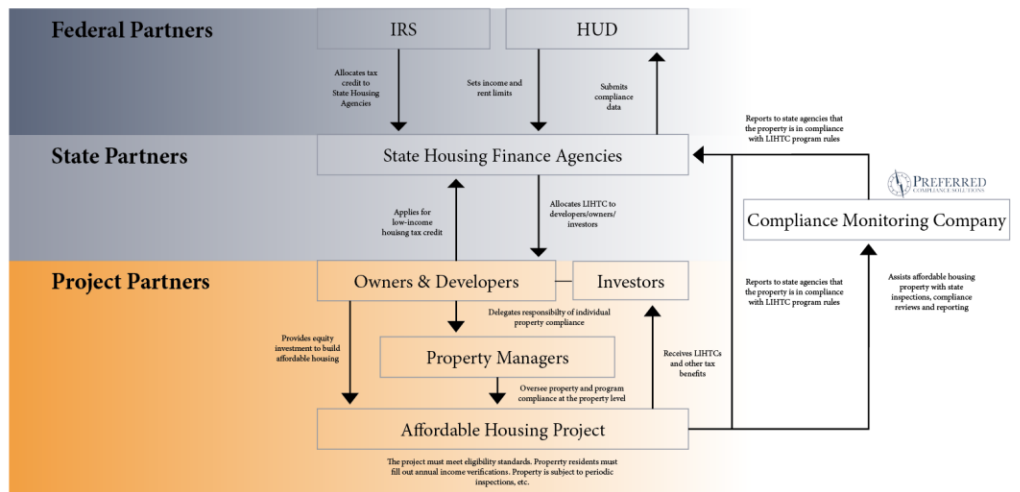


NATIONAL
COUNCIL
for Mental
Wellbeing

Housing Agency Partners

Housing Finance

LIHTC AT A GLANCE



- Consulting Firms that understand the housing finance landscape in your area and know how to get the funding needed to build
- Understands and braids funding across a variety of funding streams

© All rights reserved. No utilization or reproduction of this material is allowed without the written permission of CSH.



NATIONAL
COUNCIL
for Mental
Wellbeing



Housing Developers

- Brings together all the partners to get it BUILT
 - Land acquisition
 - Architects
 - Construction
 - Compliance

© All rights reserved. No utilization or reproduction of this material is allowed without the written permission of CSH.



NATIONAL
COUNCIL
for Mental
Wellbeing



Property Management

They know how to lease up the property, keep it in compliance with funding, and maintain good neighbor relationships



© All rights reserved. No utilization or reproduction of this material is allowed without the written permission of CSH.



NATIONAL
COUNCIL
for Mental
Wellbeing

Landlords



© All rights reserved. No utilization or reproduction of this material is allowed without the written permission of CSH.



NATIONAL
COUNCIL
for Mental
Wellbeing

Community Action Agencies



- HUD-funded agencies that offer a variety of services for low-income community residents including
 - Home Repairs
 - Housing Counseling
 - First-time Homeowner programs
 - Know the local housing-related resources

© All rights reserved. No utilization or reproduction of this material is allowed without the written permission of CSH.



NATIONAL
COUNCIL
for Mental
Wellbeing



Fair Housing Agencies



**EQUAL HOUSING
OPPORTUNITY**

- HUD-funded agencies that make sure fair Housing law is upheld
- Federally protected classes include
 - Disability
 - Race, Color
 - Ethnicity
 - Gender or Gender Identity
 - Religion or Creed
 - Marital Status
 - Sexual Orientation
 - Family Composition

© All rights reserved. No utilization or reproduction of this material is allowed without the written permission of CSH.

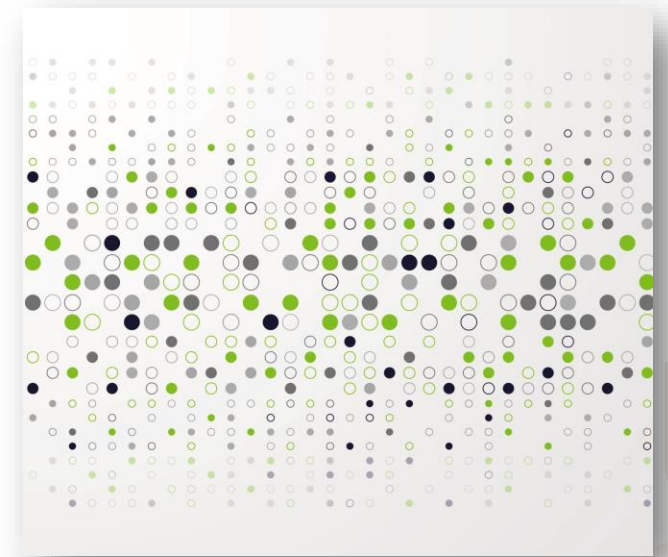


NATIONAL
COUNCIL
for Mental
Wellbeing



Next Steps

- Am I or anyone else in my agency connected to these partners?
- What data do we collect on the housing status of our participants?
- What planning efforts need our voice? What advocacy efforts?



© All rights reserved. No utilization or reproduction of this material is allowed without the written permission of CSH.



NATIONAL
COUNCIL
for Mental
Wellbeing



Assessing Potential for Collaboration



Housing Asset Mapping

Community Housing Asset Workbook

The Community Housing Asset Workbook is designed to support health centers in exploration of local housing resources for their patient populations. Each Workbook Tab accompanies the Learning Collaborative Sessions covering Homeless System Resources, Affordable and Special Population Housing Resources, Supportive Housing and other housing models, and Health and Housing Partnerships. The outline provided in each of the tabs are a base to collect information and work from and health centers can adapt as needed for local context. The goal is for health centers to have one document that encompasses all housing resources within the local community.

Homeless System	Affordable Housing and Special Pops	Supportive Housing/Other Models	Partnerships: Make It Happen
Continuum of Care Emergency Solutions Grant Coordinated Entry Emergency Shelters Transitional Housing Permanent Housing	Public Housing Vouchers HIV/AIDS Veterans Elderly Disabled State and Local Resources	Supportive Housing Recovery Housing Group Homes Affordable Housing	Assess Your Health Center Identify Partners Assess Partners


© All rights reserved. No utilization or reproduction of this material is allowed without the written permission of CSH.



NATIONAL
COUNCIL
for Mental
Wellbeing



Housing Partnership Self-Assessment



Assessing Readiness for a Health and Housing Partnership

The Health and Housing Readiness Toolkit is designed to support health center staff to understand capacity to engage with the local housing sector. This workbook can be used to assess readiness, understand the next action steps, begin to identify potential partners within their local community and connect to resources for ongoing support. Establishing partnerships will ultimately allow health centers to effectively address social determinants of health (SDOH) among their patients.

Assessing Readiness Tool	Assessment Score Report <small>After completing the self-assessment</small>	Quick Guide to Housing Programs	Partnership Mapping
--------------------------	--	---------------------------------	---------------------

© All rights reserved. No utilization or reproduction of this material is allowed without the written permission of CSH.



NATIONAL
COUNCIL
for Mental
Wellbeing





Thank you!

NATIONAL
COUNCIL
for Mental
Wellbeing



Previous & Upcoming Sessions

1. [Session 1 Recording and Slides](#)
2. [Session 2 Recording and Slides](#)
3. **August 14, 2024: 3:30 – 5 p.m. EST - [Supportive Housing 101](#)**
4. **September 4, 2024: 3:30 – 5 p.m. EST - [Partnership Examples from CCBHCs](#)**



CCBHC-Expansion Grantee National Training and Technical Assistance Center

We offer CCBHC grantees...



Virtual Learning Communities, Webinars and Office Hours

Regular monthly offerings that are determined based on grantees expressed needs.



Opportunities for Collaboration with Other Grantees

Monthly Peer Cohort Calls for CCBHC Program Directors, Executives, Evaluators and Medical Directors.



Direct Consultation

Request individual support through our website requesting system and receive 1:1 consultation.



On-demand Resource Library

Includes toolkits, guidance documents, and on-demand learning modules.



Access our website to register for upcoming events, submit a consultation request or scan our on-demand resource library:
<https://www.thenationalcouncil.org/program/ccbhc-e-national-training-and-technical-assistance-center/>

NATIONAL
COUNCIL
for Mental
Wellbeing

The screenshot shows the homepage of the National Council for Mental Wellbeing. At the top, there is a navigation bar with links for Engage, Login, Store, and Search. Below this are dropdown menus for About Us, Our Work, Get Involved, Membership, and News & Events. The main header features the organization's logo and tagline, "Working to ensure that mental wellbeing is a reality for everyone." A large photo of four diverse women is displayed. Below the header, there is a section for "HILL DAY at Home" on October 18, 2023, with a "Register Now!" button. To the right, a "Blog" section lists three articles: "Shaped by a Moment: My Journey to Mental Health First Aid", "Keeping Youth Mental Wellbeing in Mind (Part 2)", and "Recovery Month: Let's Hear it for Peers". Below the blog is an "Event" section for "Hill Day at Home 2023" on October 18, 1:00 pm - 4:00 pm, with a "Read more" link and a "PUBLIC POLICY" tag. At the bottom, there is a "National Recovery Month 2023" section and a "How You Can Get Involved" section.

Questions or Looking for Support?



Visit our website and complete the [CCBHC-E NTTAC Request Form](https://thenationalcouncil.org/program/ccbhc-e-national-training-and-technical-assistance-center/request-training-assistance/)



thenationalcouncil.org/program/ccbhc-e-national-training-and-technical-assistance-center/request-training-assistance/

NATIONAL
COUNCIL
for Mental
Wellbeing