



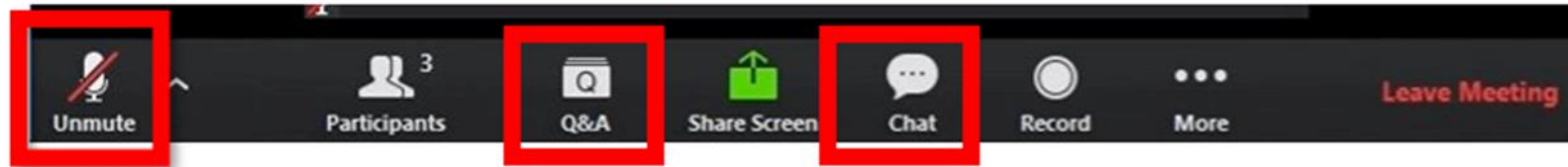
NATIONAL
COUNCIL
for Mental
Wellbeing

SJLA Learning Series September 2024 Event: Increasing Accessibility of Mental Health Services for Unhoused Populations in Rural and Urban Communities

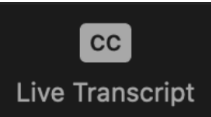
Wednesday, September 18 , 2024
12-1 p.m. ET

Thank you for joining! The webinar will begin at the top of the hour.

Asking A Question & Using Closed Captioning



All functions are located at the bottom of your screen

- Ask questions by using the Q&A function (you will **not** be able to unmute). Please indicate if you would like your questions to be anonymous.
- Use the chat for discussion & interactive activities.
- Click  and then select "Show Captions" to access closed captioning or "View Full Transcript" to access the transcript.

*If you are experiencing technical difficulties, please send a direct Zoom chat message to Hosts and Panelists.

SJLA Community Norms

- Practice empathy: discussions around social justice and equity touch on sensitive topics that require us all to be understanding of each other's backgrounds and experiences.
- As you participate in today's webinar, please remember to stay committed to openness and learning.

Chat Norms:

- We may have differing opinions on ideas, but **those differences should always be discussed respectfully to facilitate education and growth.**
- Insulting, bullying, inflammatory, and offensive language will result in removal from the webinar.
- If you have any questions or concerns or are experiencing issues in the group, feel free to reach out to one of the moderators privately in the chat or by emailing SJLA@thenationalcouncil.org. We are here to help!



Frequently Asked Questions

- **All Learning Series events are recorded and will be made available to view on demand, along with a copy of these slides, on our SJLA webpage** within 48 hours following the event's conclusion.
- **The SJLA Workbook is not required to participate in the Learning Series.** However, if you are interested in purchasing a copy, it is available on our SJLA website.
- The SJLA Learning Series **is not CEU accredited.**
- **There will not be a certificate of completion for attending the SJLA Learning Series.** However, if you would like proof of attendance for your employer, please email SJLA@thenationalcouncil.org and we would be happy to provide you with an email verification.





Description

Mental health and substance use treatment is often inaccessible for unhoused populations. In this SJLA Learning Series event, we will focus on the importance of supporting unhoused populations and connecting them with necessary services without judgment or stigma.

Our speakers will highlight the social determinants of health that impact access to treatment in rural and urban communities. We will also explore innovative approaches to working with unhoused populations, including children, youth and adults, so they can successfully navigate local systems and receive critical resources and care.

NATIONAL
COUNCIL
for Mental
Wellbeing



Learning Objectives

Participants will:

1. Understand the barriers to mental health and substance use treatment for unhoused populations.
2. Learn how to effectively work with unhoused populations in rural and urban settings.
3. Explore innovative approaches to helping unhoused populations navigate the housing system and access necessary mental health and substance use services.



NATIONAL
COUNCIL
for Mental
Wellbeing



Today's Presenters



Henry Miller
Executive Director
The Samaritan House of Orangeburg
County
Pronouns: he/him



Cathy Batista, LCSW
Chief Program Officer
Anthos|Home
Pronouns: she/her





***THE SAMARITAN HOUSE
of Orangeburg, Incorporated***

“Changing Lives Helping People”

***1580 Middleton Street
Orangeburg, SC 29115***





Vision of TSH

Vision

Everyone has a safe place to live.

Mission

To offer people experiencing homelessness shelter and resources to secure housing.

Core Values

Respect and Dignity

Treat and value one another with equal worth.

Service

Contribute resources and talents to assist in the well-being of others.

Outcome Driven

Empower and embrace differences to achieve desired goals and objectives.

Compassion and Caring

Demonstrate humility and passion to others experiencing distress and/or life challenges.

Integrity

Exemplify honesty and strong moral principles: “doing the right thing even when no one is looking.”

Accountability

Accept responsibility and ownership for one’s decisions and actions.

***Disclaimer:** The Samaritan House of Orangeburg County, Incorporated (TSH) is an equal employer. TSH does not discriminate in employment, recruitment, Board membership, advertisements for employment, compensation, termination, promotions, and other conditions of employment, applications of potential resident(s), and volunteers based on race, color, religion (faith), gender expression, age, national origin (ancestry), disability, marital status, sexual orientation, military status, or any other discriminatory reason.*





TSH GOALS

- The Samaritan House improves the quality of life for its residents through individualized housing stabilization programs and services.
- The Samaritan House engages competent and ample staff and volunteers to carry out its mission, while maintaining the personal well-being of its human resources.
- The Samaritan House offers a facility that is safe, efficient, comfortable, and provides for a productive workplace and living space that meets the needs of everyone we serve.
- The Samaritan House Board governs efficiently and with integrity, guided by sound management principles.





Laura's Story



www.samaritanhouseorangeburgsc.org



TSH – Accomplishments

September 2020 – May 2024



ACCOMPLISHMENTS

“Changing Lives Helping People”

September 2020 – May 31, 2024

■ Employers Who Provided Employment/Work Opportunities

- ♦ Allied Air
- ♦ Broughton Street Café & Ice Cream
- ♦ Chick-fil-A
- ♦ CookOut
- ♦ Cracker Barrel
- ♦ Dairy O
- ♦ Goodwill
- ♦ Husqvarna
- ♦ HireQuest
- ♦ McDonald's
- ♦ OCAB
- ♦ Orangeburg County School District
- ♦ Pet Supply
- ♦ Shoney's
- ♦ Sodexo
- ♦ Staffmark
- ♦ TRMC
- ♦ Zaxby's

■ Residents' Successes

- 90** Gained employment
- 156** Received permanent housing
- 115** Relocated to Temporary Housing Destinations (family/friends)
- 75** Received housing vouchers and/or housing relocation assistance
- 125** Received job placement counseling
- 30** Graduated with a certificate from the Back to Work Program by SC Works & SNAP to Work Program
- 45** Received medical or prescription coverage or assistance

■ Agency Accomplishments

- ♦ Residents served: **281** men, **177** women, **106** children ... **(Total Residents – 564)**
- ♦ Served an average of 500 meals monthly to community (non-shelter) residents facing food insecurity



TSH – Accomplishments Continued

September 2020 – May 2024

■ Agency Accomplishments

- Residents served: **281** men, **177** women, **106** children ... **(Total Residents – 564)**
- Served an average of 500 meals monthly to community (non-shelter) residents facing food insecurity
- Hired 3 former residents as employees at The Samaritan House
- Hired Volunteer Coordinator - Doubled our enrollment of volunteers (individuals, organizations, churches)
- Received a legislative/earmark award of \$450,000 sponsored by Senator Brad Hutto for roof replacement and shelter improvements
- Received a \$50,000 grant from the City of Orangeburg to paint the exterior of the building, the retaining walls, the storage building, and to resurface the driveway
- Purchased 55 new beds and wardrobe closets with an award granted by the City of Orangeburg for \$49,500
- Replaced the outside yard sign
- Replaced commodes and sinks on the male and female corridors (donated by Lowe's of Orangeburg)
- Partnered with Cross County Connection and obtained Bus Vouchers for resident transportation
- Partnered with Partner with Goodwill - Job Placement Opportunities
- Partnered with McDonald's - Job Placement Opportunities
- Partnered with OCTech, [SCSU](#) and [Claflin University](#)- Internship Program
- Partnered with Chick-Fi-La - Job Placement Opportunities
- Replaced 2 AC units (Donated by Allied Air)
- Partnered with Sheakley to place light duty-[bound employees in vital work positions at TSH](#)
- Partnered with the Court System to place individuals required to do community service

Primary Income Sources (2023) – 50% Grants & Awards (State, Federal)
Secondary Income Sources (2023) – 50% Community (Individuals, faith-based and civic organizations, government, board members, business and industry, foundations)



06.10.24



TSH Residents' Demographics

The Samaritan House of Orangeburg County, Incorporated

RESIDENTS' DEMOGRAPHIC FACT SHEET

September 2020 – May 31, 2024



Age range of the residents – Newborn to 84 years of age

Average number of monthly intakes -- 25

- Majority of the residents:

- **564 Total Residents** – 458 adults, 106 children under 18

- Limited work history

- Unemployed and/or no income from any source

- No means of transportation

- No health coverage or health care provider

- Developmental and Physical Disabilities **(122)**

- Experiencing family dynamics and Domestic Violence History **(62)**

- Experience varying degrees of mental illness and substance abuse **(183)**

- Chronic homelessness **(72)**

- Varying levels of criminal backgrounds **(75%)**

- Entered the shelter by Self-Referrals

- Average length of stay – 6 months

- Many of the residents:

- Work skills: carpentry, painting, maintenance, janitorial, plumbing, manufacturing, food service

- Self-motivators

- Veterans

- Employed

- Receive financial/medical benefits



TSH Residents' Demographics Continued

Receive SNAP benefits
Have transportation

Annual Budget for Ordinary Income and Expenditures (2023) - \$385,000

SERVICES WE OFFER

- Bed space – **23-bed female dormitory, 31-bed male dormitory** - clean and safe environment
- Three (3) meals and snacks each day
- Clothing (as needed) and Hygiene Products
- Washers and Dryers
- Case Management Services - Personal and Professional Skills Development; Relocation Planning
- Transportation: medical providers, work, employment opportunities, professional service providers
- Referrals: Professional Service Providers to include mental health, vocational rehabilitation, substance abuse services, SC Works, SSA, DSS, DHEC, OCAB, housing assistance providers, health enrollment providers, health practitioners, counseling, spiritual enrichment, Life Skill Classes, and mentors
- Onsite Services: Financial Classes, Life Skill Classes, Nutritional Education, Rapid HIV Testing, Hepatitis, COVID Testing
- **Relocation Assistance: Furnishings, Starter Food Boxes, other Household Needs**
- Medication Assistance
- Assistance with securing Birth Certificates, Social Security Cards, Immunizations, School Transcripts
- 24 hours – 365 days of Shelter Services

Rev. 06.10.24



TSH Relationships

Together We Made a Difference!



*Your
Continued
Support Is Needed*

*To Keep
The Samaritan House
Doors Open.*

*It's A Blessing To Be
A Blessing!*

Collaborative Relationships

All for 1 Motorcycle Club
Allied Air
The Baptist Association
Beta Zeta Omega Chapter, Alpha Kappa
Bimbo Bakery
Calhoun County Council
Carpenters for Christ
Central Carolina Community Foundation
Christian Antioch House of Prayer
Citizens Against Sexual Assault (CASA)
Claflin University
Coca Cola
DHEC (Orangeburg)
Dominion Energy Foundation
Edisto Habitat for Humanity
Edisto Primary/Elementary School
Emergency Food and Shelter Program
Empower Her Chapter of ABWA of Orangeburg
Family Health Centers, Incorporated
Food Lion Warehouse, Elloree, SC
Harvest Hope Food Bank
Hope Health of Orangeburg
Hundred Black Men
Jamison's Pharmacy
Lowe's of Orangeburg
MUSC

South Carolina Legal Services
South Carolina State University
St. Peter's COGIC
St. Stephen United Methodist Church
Starbucks
Foodshare Program
Three Crosses Outreach
Transitions Homeless Center
Tri-County Commission on Alcohol and Drug Abuse
United Way of the Midlands
Vocational Rehabilitation Department
Word of Faith Church

Major Food Pantry Donors/ Food-Drive Organizers

Circle K Store
Dukes Barbecue (Whitman Street)
Epsilon Omega Chapter, Omega Psi Phi Fraternity, Incorporated
Husqvarna Outdoor Products
Macedonia AME Church
New Light United Methodist Church Women
Orangeburg Church of the Redeemer
Orangeburg Cornerstone Community Church
Orangeburg-Wilkinson High School



TSH Relationships Continued

THANK YOU!



MUSC
Mid-Carolina Youth Shooting Team
Mount Zion Baptist Church
OCAB Community Action Agency
OP Prep Lower Campus
Orangeburg Area Mental Health
Orangeburg-Calhoun Free Medical Clinic
Orangeburg-Calhoun Technical College
Orangeburg Christian Academy
Orangeburg Department of Public Safety
Orangeburg Country Club
Orangeburg County DSS
Orangeburg County Sheriff Department
Orangeburg County School District
Orangeburg Growing COB
Orangeburg Lutheran Church
Orangeburg Morning Rotary Club
Orangeburg Social Security Office
Rebound Behavioral Health
The Regional Medical Center
Roosevelt Gardens Apartments
The Salvation Army
SC Works Orangeburg
Sissy Blewer, Toadily Yours Printing

Prime Trucking Company
Sheridan Elementary School
Sonic, North Rd, Orangeburg
State Credit Union
St. Matthews Christian Center
St. Stephen United Methodist Church
Wannamaker Insurance Agency
WSSB The People Station 93.7.
Zeus Industry

Meals Served on Site

Good News Ministries
Holy Ground Worship Center
House of Pizza, Sims St., Orangeburg, SC
Johnson Family, Sumter, SC
Marco's Pizza
Mt. Calvary Baptist Church
Orangeburg Alumni Chapter of Delta
Sigma Theta, Inc
Kingdom Life Men's Ministry
The Regional Medical Center
Sisters of the Holy Cross
Starbucks Foodshare Program
Williams Chapel AME Church



County Demographics

Counties of Previous Residency

We intake residents from SC and other States.

County	Total Clients
Aiken	3
Allendale	1
Bamberg	13
Barnwell	2
Beaufort	4
Berkeley	2
Calhoun	5
Charleston	15
Clarendon	1
Colleton	3
Dorchester	7
Florence	1
Georgetown	1
Greenville	2



County Demographics Continued

Horry	1
Kershaw	1
Laurens	1
Lexington	4
Newberry	1
Orangeburg	190
Outside SC	35
Richland	19
Spartanburg	3
Sumter	1
Undisclosed	180





The Samaritan House TEAM

Mr. Henry Miller,

Executive Director

hmiller@samaritanhouseorangeburgsc.org

Mrs. Tammie Wideman,

Shelter Case Manager

Mrs. Kathy K. Payne,

Volunteer Coordinator

Mr. Michael Barrett,

Intake/Assessment Coordinator



Anthos Home

Cathy Batista, LCSW, Chief Program Officer

Anthos | Home: Who We Are

Mission: Helping New Yorkers move as quickly as possible into safe and affordable apartments, while providing the support necessary to succeed as tenants and thrive as individuals and families.

- Founded in 2022 by Laura Lazarus and Leslie Abbey
- Addressing homelessness and voucher utilization challenges
- Inspired by Brilliant Corner's Flexible Housing Subsidy Model
- Partnering with Government, Nonprofits, Housing Providers, and Funders
- Making the voucher process easier for all stakeholders

Anthos | Home: What We Do

We Bank Units: Through our network of landlords and brokers, we prepare and reserve units to rent to voucher holders.

We Match Participants: We assess what units best match the individuals and families we are working with, taking cost, accommodations, resource access, community, household size, and more into account.

We Assist: With our flexible funds we help facilitate needed repairs and provide moving services and furniture. With our expertise we help to shepherd the complex leasing package application process.

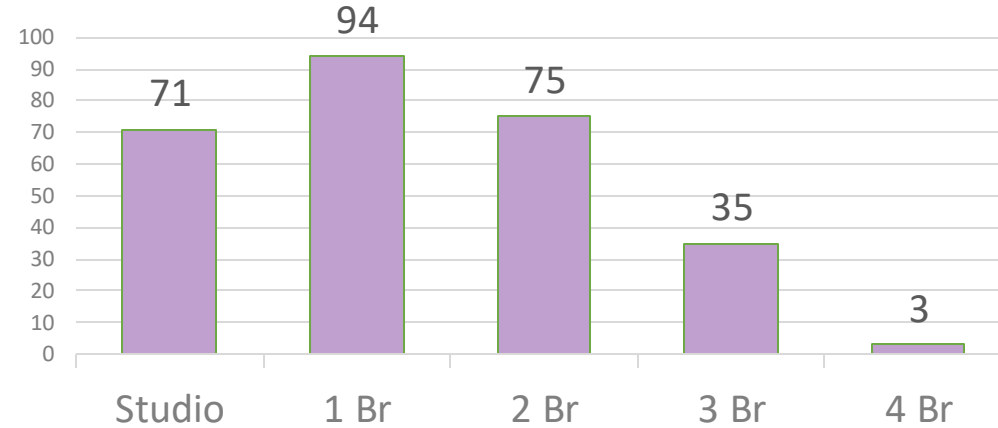
We Support: We check-in with our moved-in households at least once per month, providing wrap around support for one year and through the first lease renewal – covering arrears if needed, supporting repair completion, and offering resource connections.

NATIONAL
COUNCIL
for Mental
Wellbeing

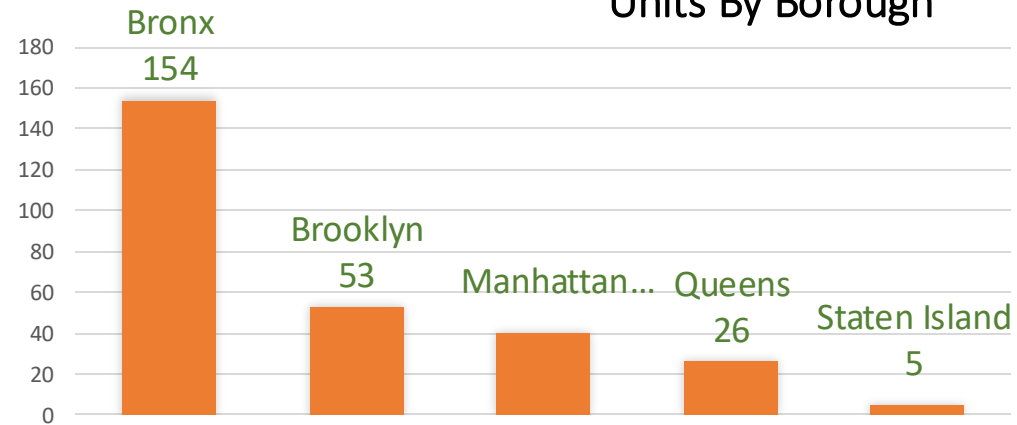
A|H Bank of Units



Units By Size



Units By Borough



Flex Pool Model

Explanation

- Inspired by Brilliant Corner's Successful Program
- Pooled funding from Government, Contract, and Philanthropic Sources
- Flexible Approach that Allows Funding to Clear the Path to Faster Housing

Examples

- Funding for Hold Fees
- Funding for Repairs
- Funding for Moving Costs and Furniture
- Funding for Ongoing Support and Other Needs

Anthos | Home: Who We Serve

Three Primary Populations

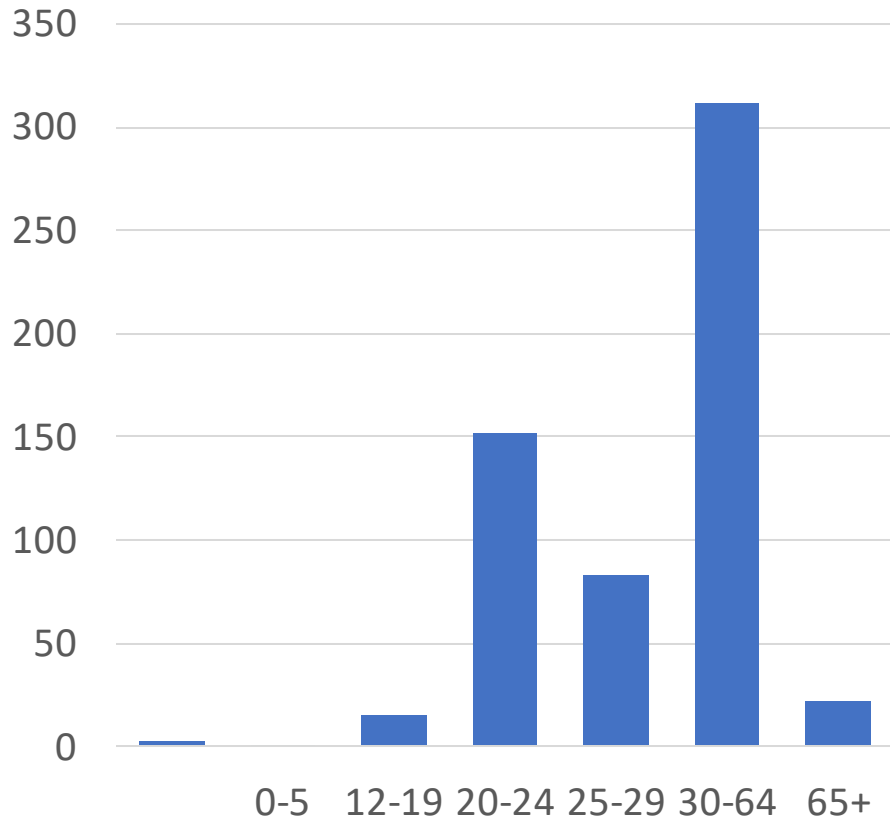
- Youth Aging Out of Foster Care
- Individuals and Families Exiting Shelter
- High Health Needs Individuals and Families

How We Accept Referrals

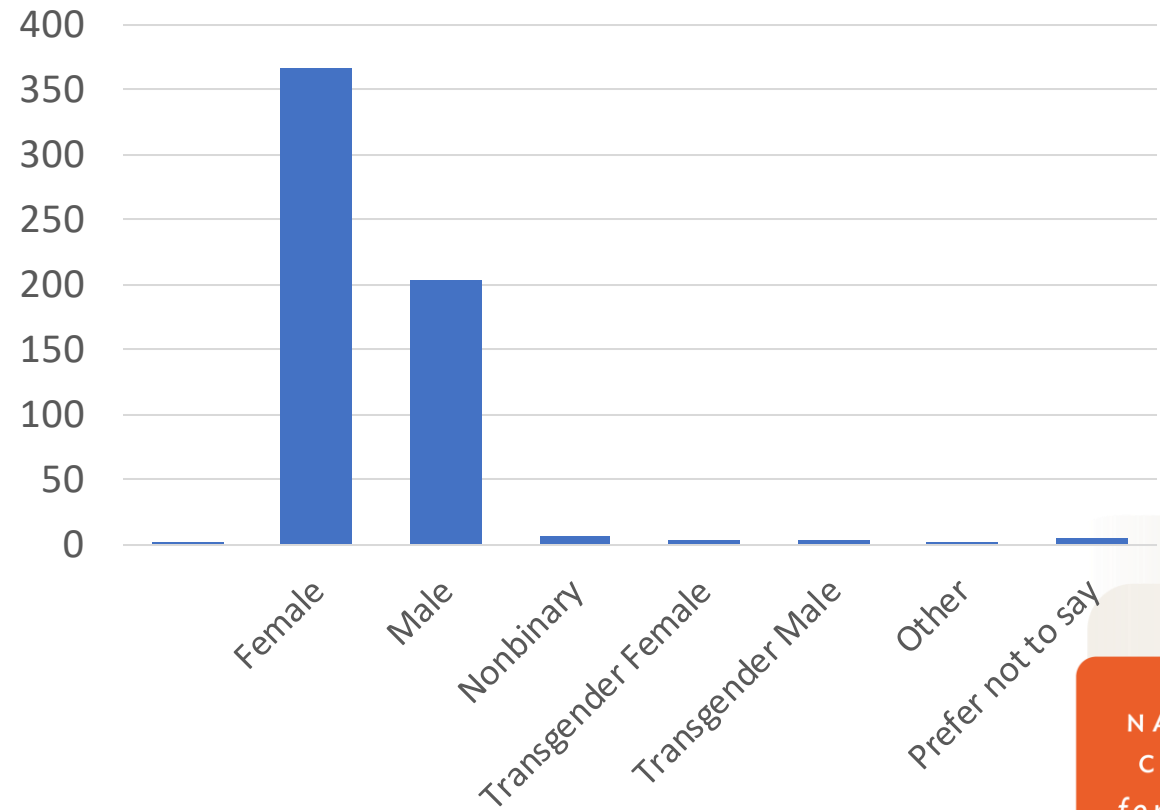
- Must have an Active Voucher
- Must be referred to us by a designated Social Service Professional

Anthos | Home: Who We Serve (cont.)

Referrals by Age

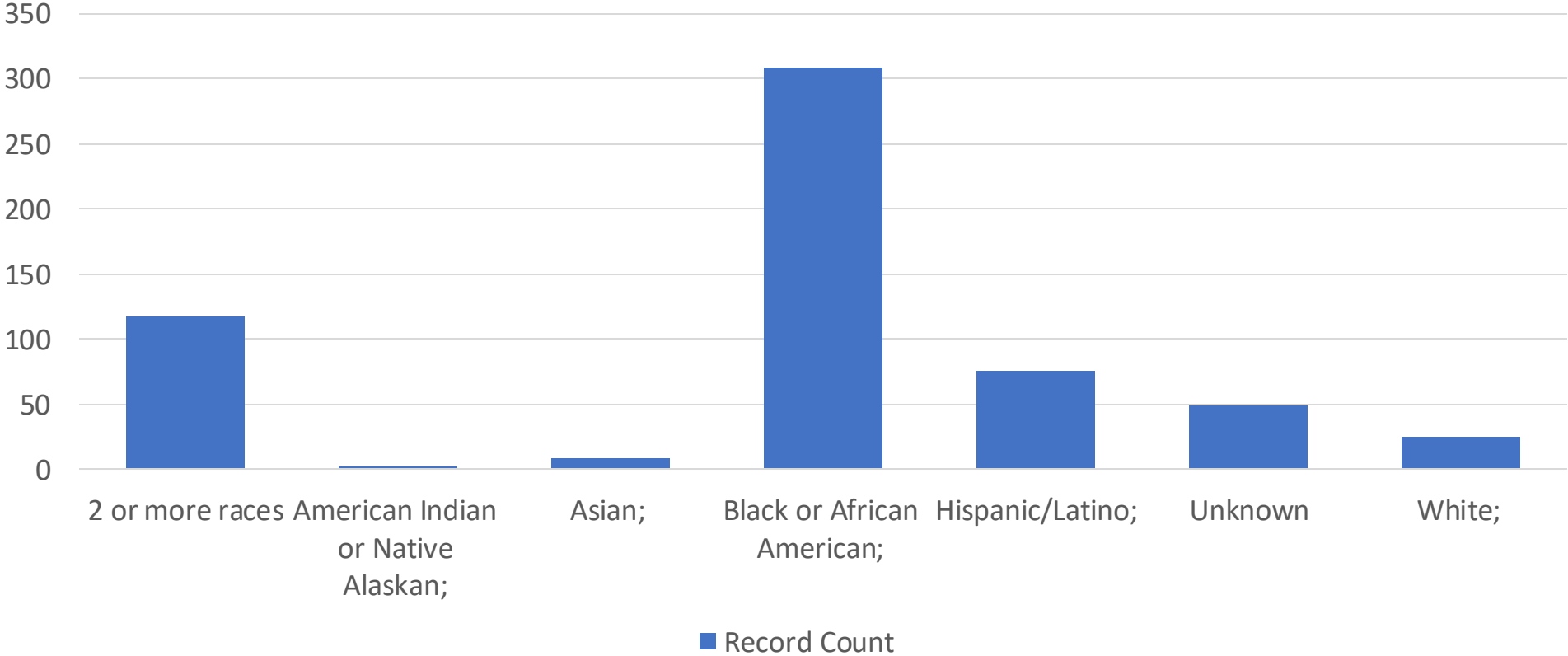


Referrals by Gender Identity



Anthos | Home: Who We Serve (cont.)

Referrals by Demographics



Health and Wellness: High Health Needs Funding

- Targeted Support for High Needs Individuals and Families
- Health Care Coordination and Collaboration
- High Health Needs Partnerships

Anthos | Home by the Numbers

- 150 Move-Ins to Date
- 80 Households Currently Connected to Units
- 650+ Total Referrals Processed
- 110 Units Currently in Our Bank
- 750+ Unit Viewings to Date
- 3000+ Case Notes

Aftercare Services

- 600+ Check Ins and Visits to Participants Post-Move In
- Anthos|Home Repaired 15 Units
- 10 Income Modifications Processed
- Paid Arrears for 10 Participants
- Resolved 11 Issues with Missing City Payments
- Maintaining Public Assistance
- Annual Lease Renewals and Subsidy Recertifications



Lessons Learned and Challenges Faced

- Referral Screening, Onboarding, and Education
- March Operational Shift
- Public Assistance Collaboration
- Landlord Partnerships

Looking Forward

- Expanding Reach Across NYC / Housing More Individuals and Families
- Advocating for City Agency Policy Shifts
- Seeking New Partnerships and Expanding Our Pool of Funders
- Creating Sustainable Aftercare and Path Towards Tenant Independence



Questions?

Thank you for your time!

Please let me know if you have any questions or comments that you would like to share.

Cathy Batista, LCSW, Chief Program Officer

cbatista@anthoshome.org

347.259.2638

Resources

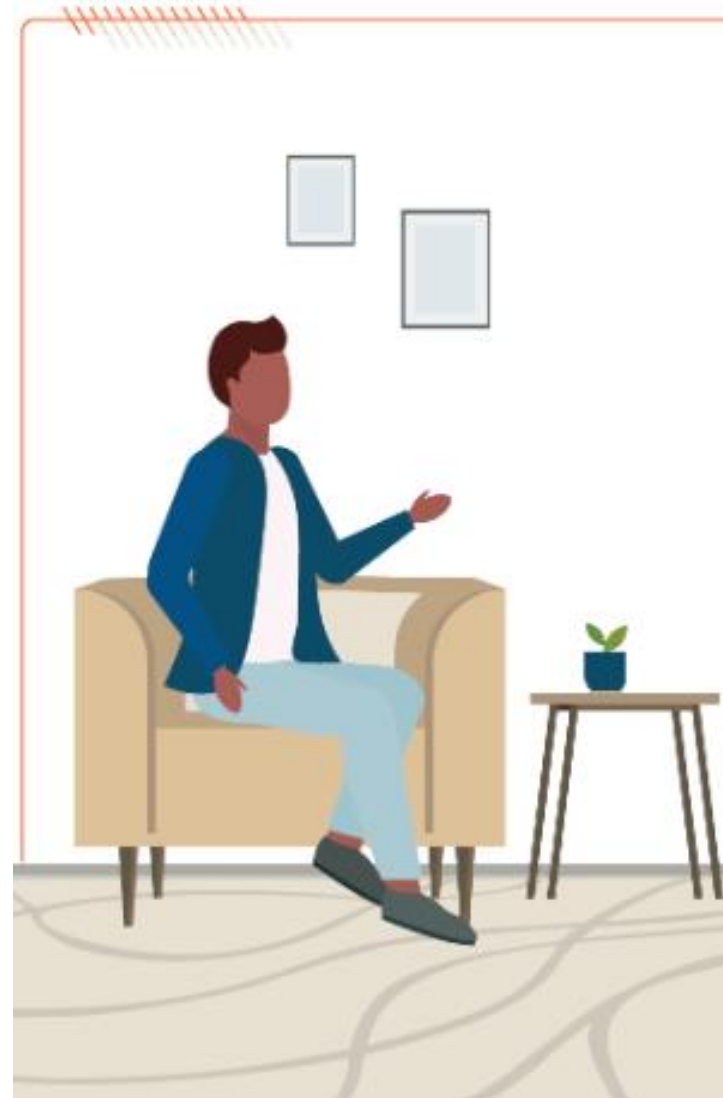
[Anthos Home](#)

[The Samaritan House of Orangeburg County](#)

[Webinar: Treatment While Unhoused:
Providing MOUD to Populations
Experiencing Homelessness](#)

[SAMHSA Homelessness Programs and
Resources](#)

[Mental Health Services in Rural
Communities](#)



NATIONAL
COUNCIL
for Mental
Wellbeing



Q&A and Open Discussion



NATIONAL
COUNCIL
for Mental
Wellbeing



SJLA LinkedIn Networking Group

The Social Justice Leadership Academy's (SJLA) LinkedIn Networking Group is a space created for Learning Series participants to connect with one another outside of our monthly events.

This group is intended to serve as a networking hub for individuals seeking to advance social justice within their organizations. By joining this group, you are indicating that you are open to networking with other SJLA participants.



<https://www.linkedin.com/groups/12879319/>

Scan the QR code or click the link above to join!



Want To Learn More?

The Social Justice Leadership Academy

The Social Justice Leadership Academy

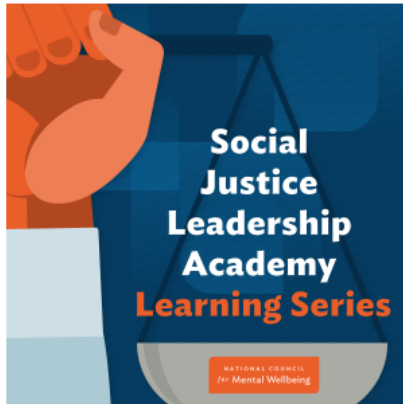
Events

The SJLA Workbook

FAQS & Contact Us

The Social Justice Leadership Academy (SJLA) Learning Series is a free, monthly series of virtual learning events. Topics will include structural and systemic inequities in mental wellbeing, structural and systemic biases, criminal justice reform, applying change management principles to advancing social justice within organizations and more. Learning events will be a mix of informational presentations, workshops and guided discussions.

The SJLA Learning Series is for professionals of all levels who are dedicated to embracing social justice principles to bring equity to communities and systems of care. While we encourage attendees to participate in all events to broaden their knowledge of social justice principles, we understand that attendees may not be able to attend every event.



Each event within the learning series is a standalone presentation within the SJLA content framework to allow attendees to register for as many events as possible as they build their social justice knowledge base at their own pace.

For further learning on topics addressed in the SJLA Learning Series, we recommend the [SJLA Workbook](#), which provides an educational background and self-guided exercises designed to help health care professionals increase their personal and organizational social justice awareness and form action plans for change.

- **Watch FREE recordings of past events**
- **Download resources on SJLA-related topics**
- **Register for upcoming events**
- **Purchase our SJLA Workbook**
- **Contact us!**

<https://www.thenationalcouncil.org/program/the-social-justice-leadership-academy/>



Evaluation

Please provide your feedback on this SJLA Learning Series webinar event at the link below. Scan the QR code or type the URL into your browser.



<https://www.surveymonkey.com/r/SJLA2024Session6>



Thank You!

